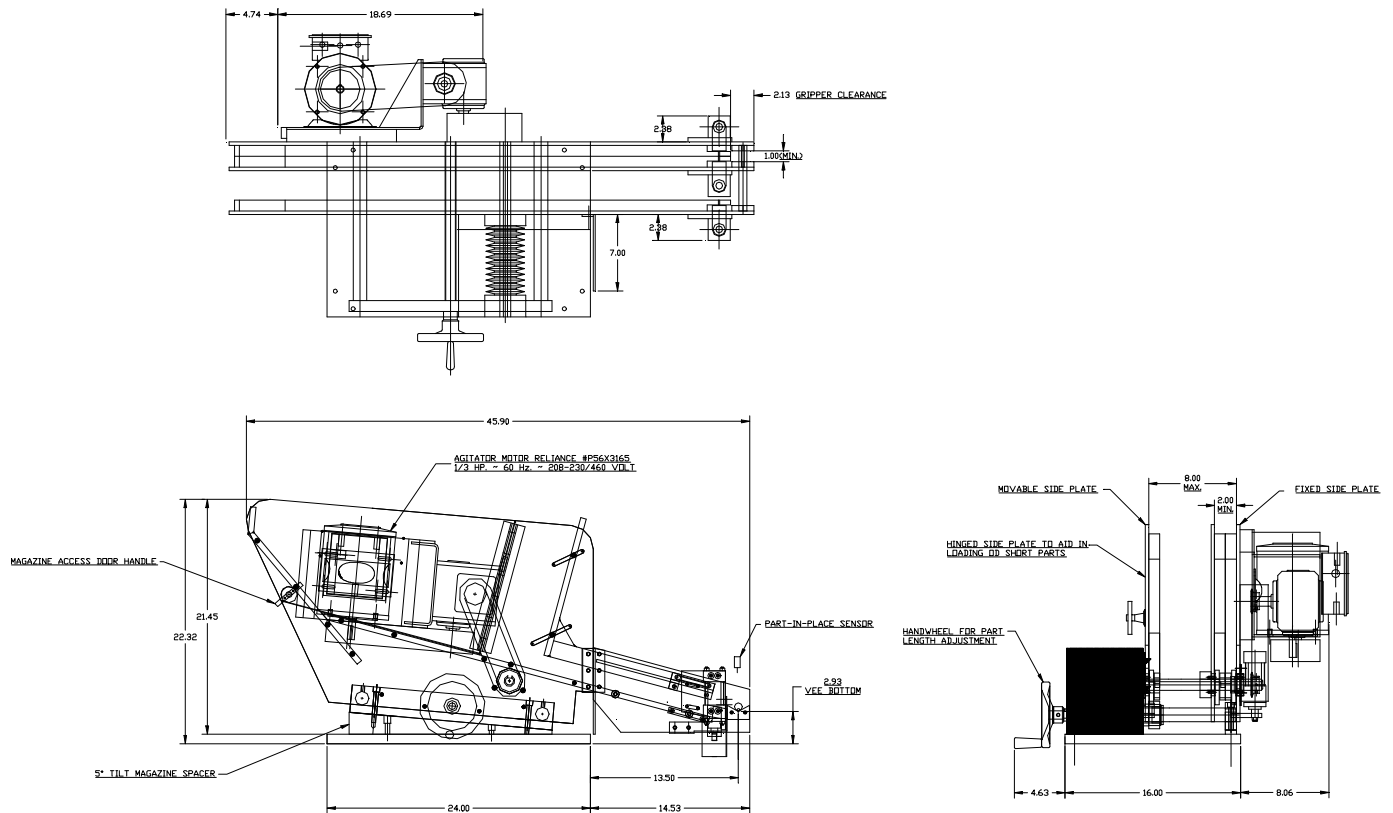


FEEDALL Model 1700-B Magazine Bar Feeder



APPLICATION:	Feed bars from a manually loaded, floor mounted magazine. Then will be fed in a continuous stream and escaped one at a time rolling onto customers v-nest.
WIDTH:	2"-6" (Adjustable)
DRIVE:	1/4 HP/AC Motor
PARTS FED (SIZE):	Steel Bars (0.25"-0.75"Ø x 2.00"-6.00" Lg.)
FEED RATE:	4 Parts/Minute
MACHINE FED:	Robot Loaded Induction Heater