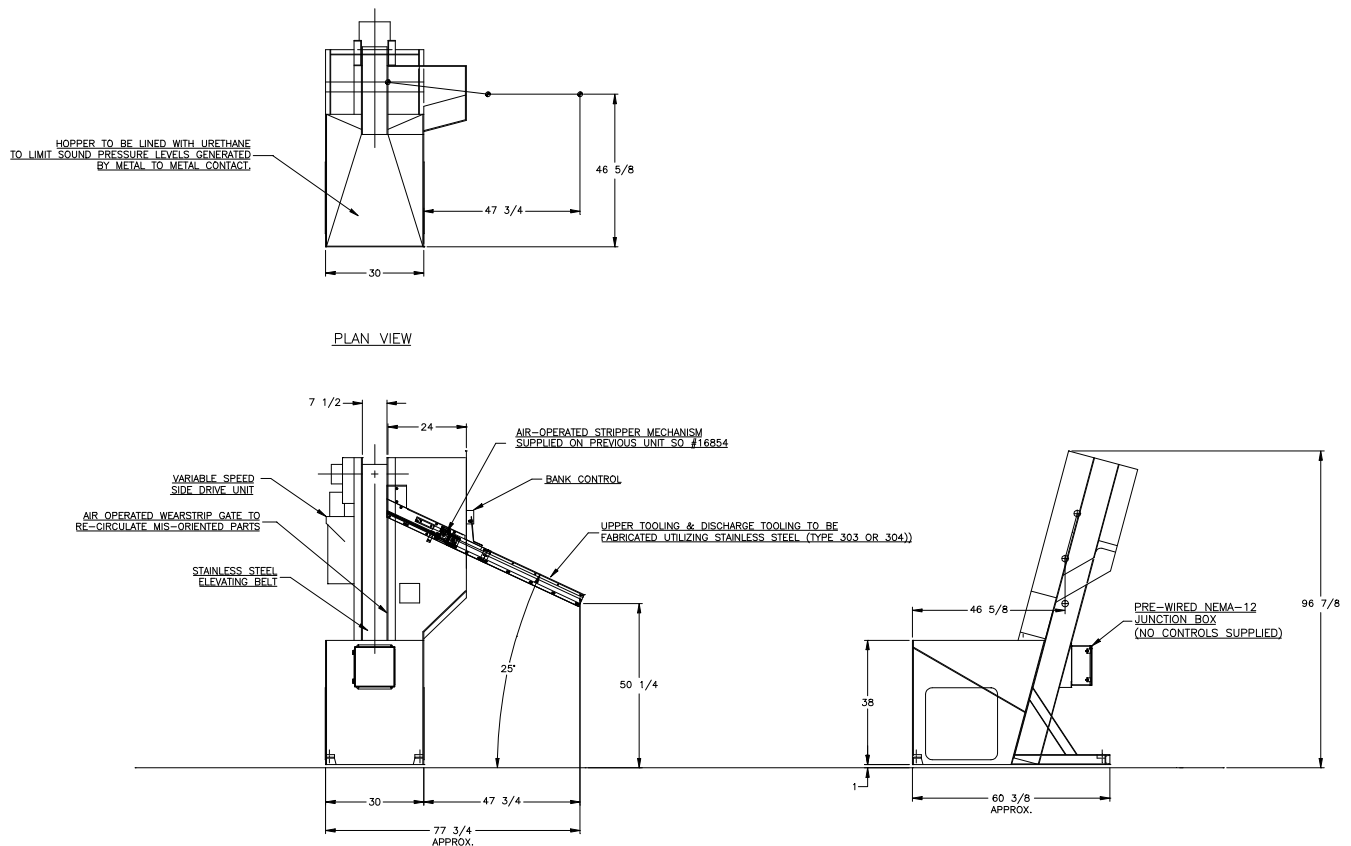


FEEDALL Model 2400-D Elevating Hopper Feeder



- APPLICATION:** Feed from a random loaded, floor mounted hopper. The parts will be elevated from the hopper via a cleated belt and discharged in a continuous stream at 25°.
- BELT WIDTH:** 7-1/2" Wide Table-Top Chain
- DRIVE:** 1/2 HP/AC Motor
- PARTS FED (SIZE):** Parking Pawl Latches (Part Matrix)
- FEED RATE:** 10 Parts/Minute
- MACHINE FED:** Inspection Machine